

## TX Series

### INDUSTRIAL BARCODE LABEL PRINTER

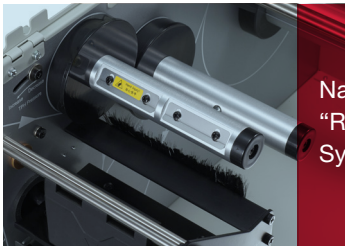


RUGGED  
PARTS  
DURABLE  
MACHINES  
SURPASSING  
PERFORMANCE

National patented  
“TPH Pressure  
Adjusting Device”



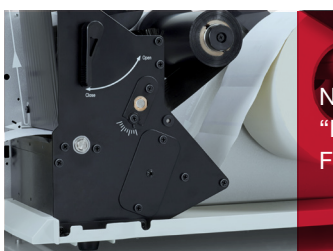
National patented  
“Ribbon Adjusting  
System”



National patented  
“Up/Down Reflective  
Media Sensors”



National patented  
“Fixed Chassis  
Frame”



#### SURPASS PERFORMANCE EXPECTATIONS WITH REMARKABLE RELIABILITY

Boasting all metal construction, a high strength aluminum frame and rugged parts, these top performance industrial printers are constructed for heavy duty endurance and a long print life.

Patented printing mechanics and reliable electronics enables the TX Series to be ideal for those demanding thermal printing applications in tough and demanding environments. Automatic detection of printer programming languages accommodates the ease of replacing other mainstream brand printers.

#### BENEFITS

National patented “Up/Down Reflective Media Sensors”, allows more types of media detection, including labels with black marks on the upper face.

National Patented “TPH Pressure Adjusting Device” ensures an optimized printing effect on various types of media.

National Patented “Ribbon Adjusting System” helps you avoid ribbon wrinkling.

National Patented “Fixed Chassis Frame” structure ensures reliability, stability and accuracy while massively printing.

Precisely designed mechanism leads to super accurate media detection. The TX can print very small labels down to 4 mm in height, and is an ideal choice for suppliers of components and spare parts.

## SPECIFICATIONS

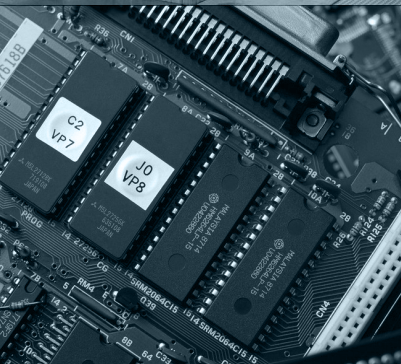
Model	TX2	TX3	TX6
Printing Method	Thermal Transfer		
Printing Resolution	203 dpi	300 dpi	600 dpi
Max Printing Speed	10 ips (254 mm/s)	8 ips (203.2 mm/s)	4 ips (101.6 mm/s)
Max Printing Width	4.09" (104 mm)	4.17" (106 mm)	4.17" (106 mm)
Max Printing Length	157" (4000 mm)	79" (2000 mm)	19.6" (500 mm)
Memory	8 MB FLASH ROM, 16 MB SDRAM		
Media	Width: 4.56" (116 mm) max. 0.79" (20 mm) min. OD: 8" (203.2 mm) max. ID: 1.5" (38 mm) min.	Width: 4.56" (116 mm) max., 0.98" (25mm) min. OD: 8" (203.2 mm) max. ID: 3" (76.2 mm) min.	
Media Thickness	0.0024" (0.06 mm) ~ 0.012" (0.305 mm), including liner		
Ribbon	Ribbon roll: OD: 3.3" (84 mm) max., ID: 1" (25.4 mm) min. Max width: 4.65" (118 mm), Max length: 1968' (600 M), Ink side: both In and Out.		
Media Sensor	Up&Down Reflective (Adjustable) / Transmissive (Adjustable)		
Fonts	Five built-in dot matrix ASCII fonts, Downloadable TrueType Fonts		
Bar Code Types	1D Barcode: Code 39, Code 93, Code 128/subset A, B, C, Codabar, Interleave 2 of 5, UPC A/E 2 and 5 add-on, EAN-13/8/128, UCC-128, etc. 2D Barcode: MaxiCode, PDF417, Data Matrix, QR, etc.		
Interfaces	RS-232 Serial, 10/100 M-bit Ethernet, USB DEVICE 2.0, USB HOST, Centronics Parallel		
LCD Display	Graphic Dot Matrix		
Power Rating	110/220 VAC ±10%, 50/60 Hz		
Weight	15 kgs		
Dimensions	W 11.3" (286 mm) x D 17.6" (448 mm) x H 11.0" (280 mm)		
Operating Environment	Temperature: 32°F ~ +104°F (0°C ~ 40°C), Relative humidity: 5% ~ 85% non condensing		
Storage Environment	Temperature: -40°F ~ +140°F (-40°C ~ 60°C), Relative humidity: 5% ~ 85% non condensing		
Optional Items	External Rewinder, Rotary Cutter		

\* All specifications are subject to change without notice.

## APPLICATIONS

Industrial Machinery  
Electronics

...



## SAMPLES

MODEL	EC5805	CDLOR	BLACK
MEID	A000001AD83039		
RSN	89HW0521		
S/N	EV2AB10E71600042		
SKU	CDHW0521		



100000120	100000121
100000122	100000123
100000124	100000125



# POSTEK

POSTEK ELECTRONICS CO., LTD.

Wisdom Plaza, Block B, Tower 2, 18th Floor  
Qiaoxiang Road, Nanshan District, Shen Zhen,  
Guang Dong, China

T +86-755-83240988  
F +86-755-83202898

WWW.POSTEK.COM.CN

